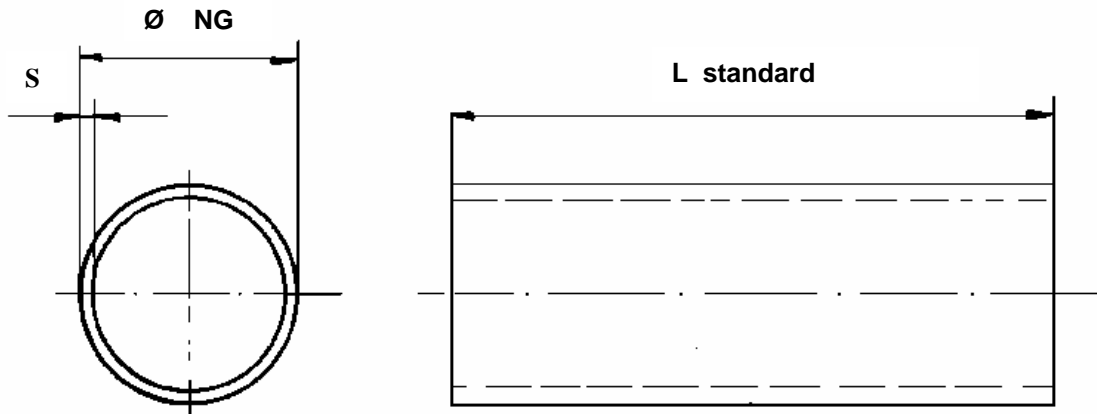


Ventilation ducting

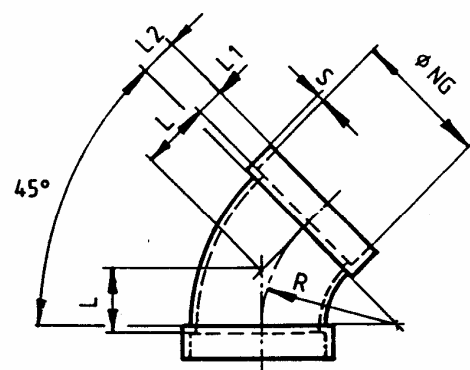
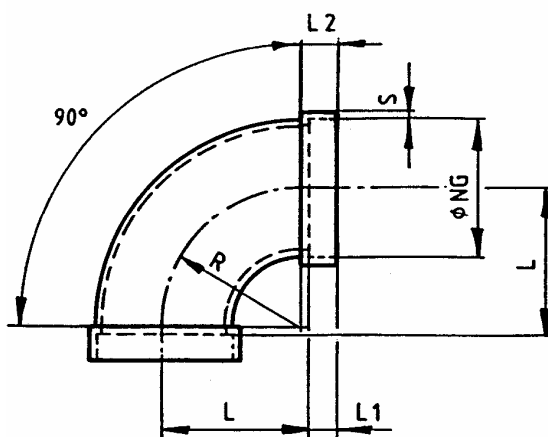
Dimensional drawing No. 1.010
Material PVC / PP / PPs / PE



Ø NG	PVC		PP		PPs		PE	
	S	L	S	L	S	L	S	L
63	1.8	5000	1.8	5000	3	5000	2	5000
75	1.8	5000	1.9	5000	3	5000	1.9	5000
90	1.8	5000	2.2	5000	3	5000	2.2	5000
110	1.8	5000	2.7	5000	3	5000	2.7	5000
125	1.8	5000	3.1	5000	3	5000	3.1	5000
140	1.8	5000	3.5	5000	3	5000	3.5	5000
160	1.8	5000	4	5000	3	5000	4	5000
180	1.8	5000	4.4	5000	3	5000	4.4	5000
200	1.8	5000	4.9	5000	3	5000	4.9	5000
225	1.8	5000	5.5	5000	3.5	5000	5.5	5000
250	2.0	5000	6.2	5000	3.5	5000	6.2	5000
280	2.3	5000	6.9	5000	4	5000	6.9	5000
315	2.5	5000	7.7	5000	5	5000	7.7	5000
355	2.9	5000	8.7	5000	5	5000	8.7	5000
400	3.2	5000	9.8	5000	6	5000	9.8	5000
450	3.6	5000	7	5000	5	5000	4	4000
500	4	5000	8	5000	5	5000	5	4000
560			5	5000	5	4000	6	4000
600	5	5000						
630			5	4000	5	4000	6	4000
710			5	4000	5	4000	6	4000
800			6	4000	6	4000	8	4000
900			6	4000	6	4000	8	4000
1000			8	4000	8	4000	8	4000
1120			8	4000	8	4000	10	4000
1250			8	4000	8	4000	10	4000

90°/45° “Beck” bends

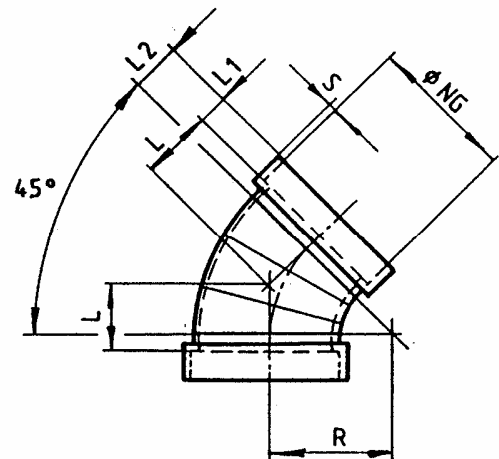
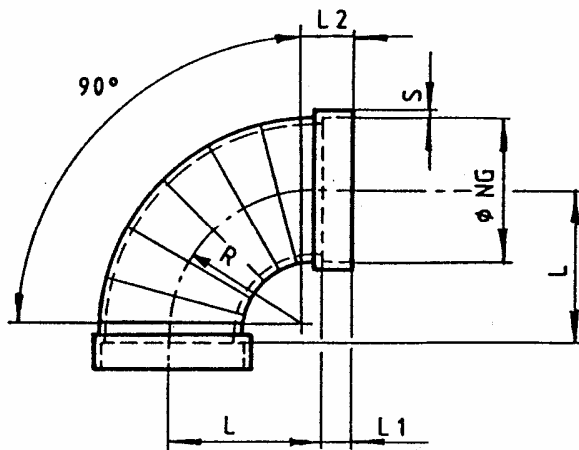
Dimensional drawing No. 1.011
Material PVC



Ø NG	R	L1	L2	S	L90°	L45°
75	75	30	40	3	85	42
90	90	30	40	3	100	48
110	110	40	50	3	120	58
125	125	40	50	3	135	62
140	140	40	50	3	150	69
160	160	40	50	3	170	76
180	180	50	60	3	190	86
200	200	50	60	3	210	94
225	225	50	60	3	235	104
250	250	45	55	3	260	114
280	280	50	60	3	290	126
315	315	60	70	3	325	142
355	355	60	70	4	365	158
400	400	60	70	4	410	176

90°/45° “Beck” bends

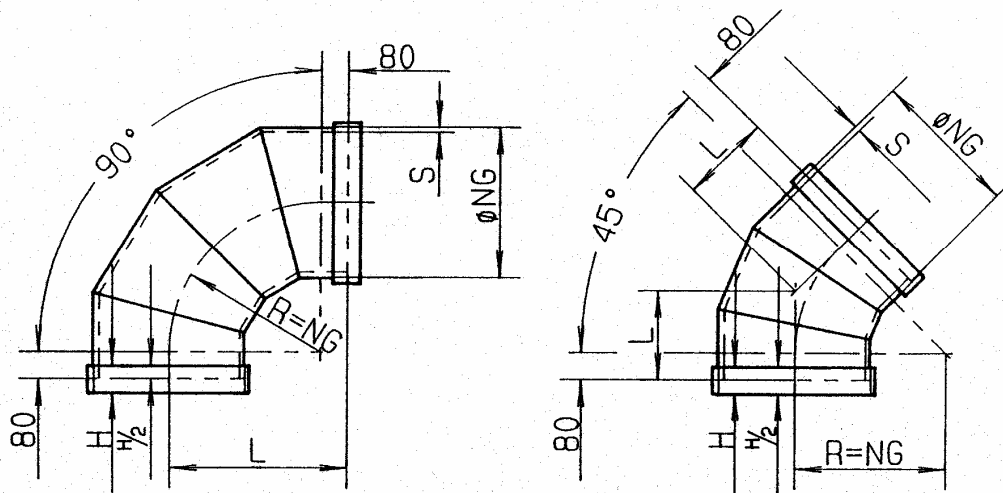
Dimensional drawing No. 1.012
 Material PP / PPs / PE



Ø NG	R	L1	L2	S	L90°	L45°
75	75	35	45	3	85	42
90	90	35	45	3	100	48
110	110	35	45	3	120	58
125	125	35	45	3	135	62
140	140	35	45	3	150	69
160	160	35	45	3	170	76
180	180	35	45	3	190	86
200	200	45	55	3	210	94
225	225	45	55	3.5	235	104
250	250	50	60	3.5	260	114
280	280	50	60	4	290	126
315	315	50	60	5	325	142
355	355	50	60	5	365	158
400	400	50	60	6	410	176

90°/45° duct-segment bends

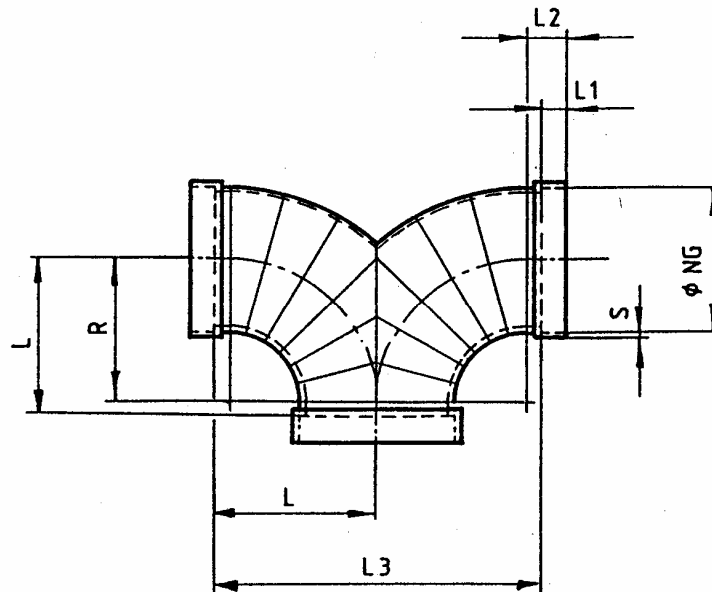
Dimensional drawing No. 1.013
 Material PVC / PP / PPs / PE



Ø NG	L 90°	L 45°	H	PVC S	PP S	PPs S	PE S
450	530	266	80	3.6	6.9	7	11
500	580	287	80	4	10	8	12.2
560	640	312	80	5	10	5	13.7
630	710	341	100	7.9	5	10	6
710	790	374	100	5.6	5	5	6
800	880	411	100	6.3	6	6	8
900	980	453	100	7.1	8	8	8
1000	1080	494	100	7.9	8	8	8
1120	1200	544	100	6	8	8	10
1250	1330	598	100	9.9	8	8	10

90° Y- connecting piece

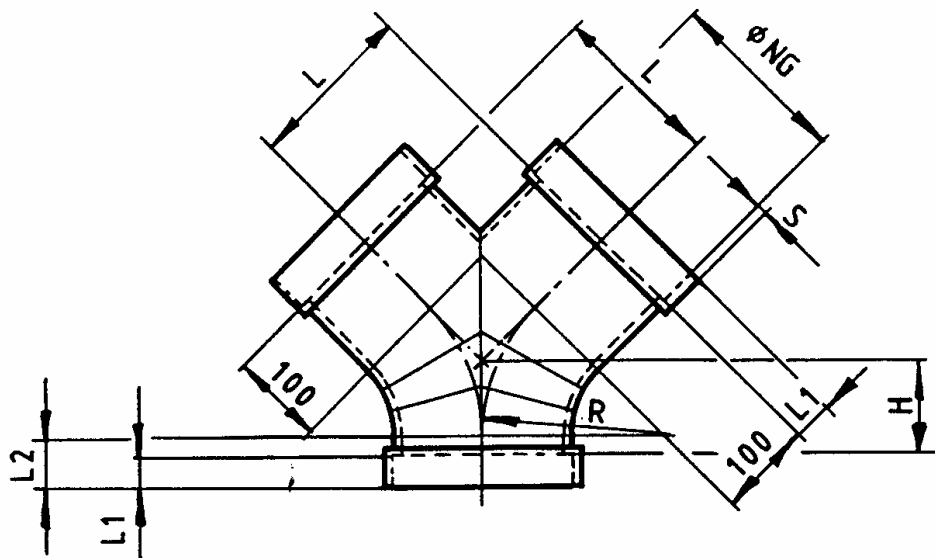
Dimensional drawing No. 1.014
Material PVC / PP / PPs / PE



Ø NG	R	L1	L2	L3	L	S
75	75	25	35	170	85	3
90	90	25	35	200	100	3
110	110	25	35	240	120	3
125	125	25	35	270	135	3
140	140	25	35	300	150	3
160	160	35	45	340	170	3
180	180	35	45	380	190	3
200	200	45	55	420	210	3
225	225	45	55	470	235	3.5
250	250	50	65	530	265	3.5
280	280	50	65	590	295	4
315	315	50	65	660	330	5
355	355	50	65	740	370	5
400	400	50	65	830	415	6

45° Y- connecting piece

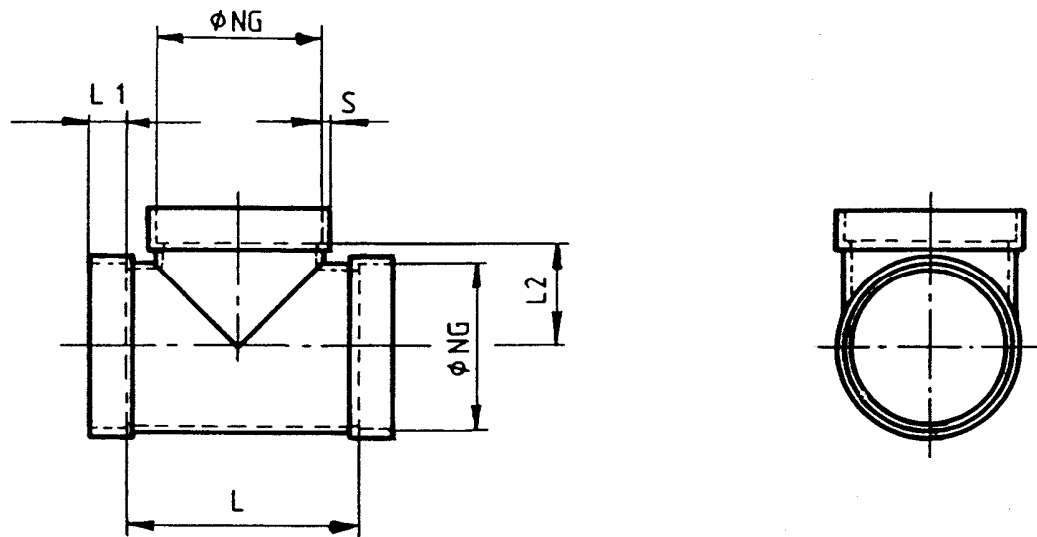
Dimensional drawing No. 1.015
Material PVC / PP / PPs / PE



Ø NG	R	L1	L2	H	L	S
75	75	25	35	41	131	3
90	90	25	35	47	137	3
110	110	25	35	56	147	3
125	125	25	35	62	152	3
140	140	25	35	68	158	3
160	160	35	45	77	167	3
180	180	35	45	85	175	3
200	200	45	55	93	183	3
225	225	45	55	103	193	3.5
250	250	50	65	118	203	3.5
280	280	50	65	132	217	4
315	315	50	65	181	231	5
355	355	50	65	163	248	5
400	400	50	65	188	266	6

90° symmetrical T-piece

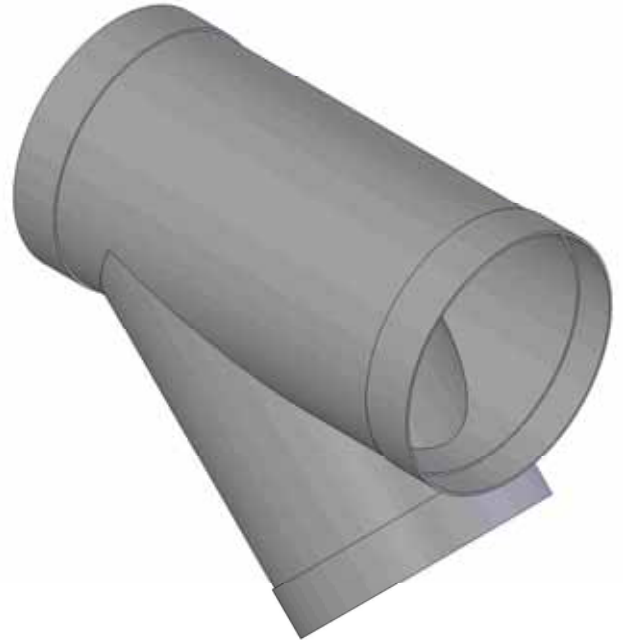
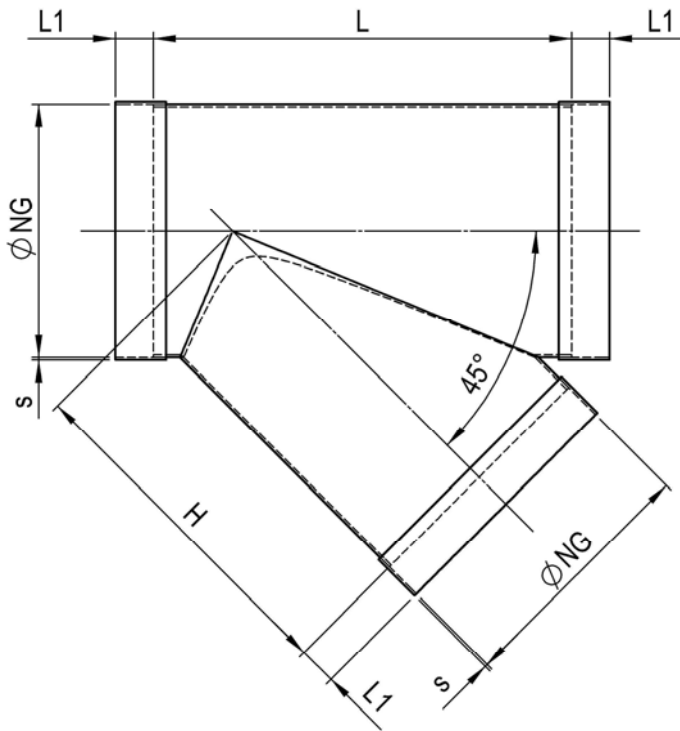
Dimensional drawing No. 1.016
Material PVC / PP / PPs / PE



Ø NG	PVC / PP / PE		PPs		PVC	PP	PPs	PE
	L	L2	L	L2	S	S	S	S
75	175	95	175	90	1.8	1.9	3	2
90	190	105	190	95	1.8	2.2	3	2.2
110	230	115	130	65	1.8	2.7	3	2.7
125	245	125	180	90	1.8	3.1	3	3.1
140	260	130	180	90	1.8	3.5	3	3.5
160	280	140	230	115	1.8	3.9	3	4
180	300	150	280	140	1.8	4.4	3	4.4
200	320	160	270	135	1.8	4.9	3	4.9
225	345	175	310	155	1.8	5.5	3.5	5.5
250	390	195	310	155	2.0	6.1	3.5	6.1
280	420	210	360	180	2.3	6.9	4	7
315	455	230	420	210	2.5	7.7	5	7.7
355	495	250	460	230	2.9	6	5	8.7
400	540	270	490	245	3.2	6	6	9.8

45° T-piece

Material PVC / PP / PPs / PE / PPs-el

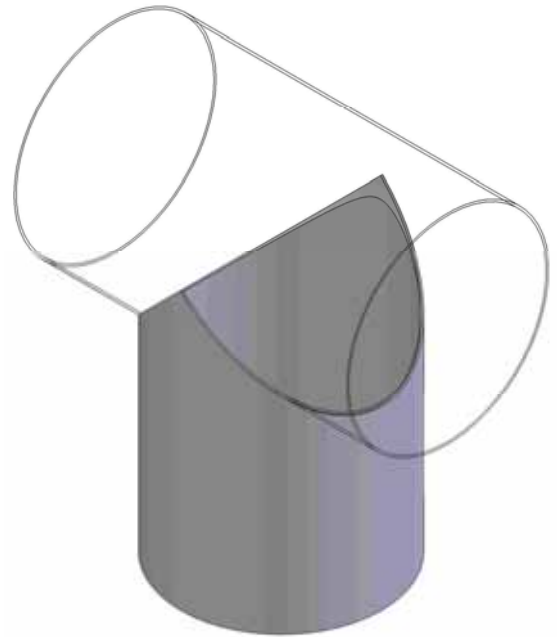
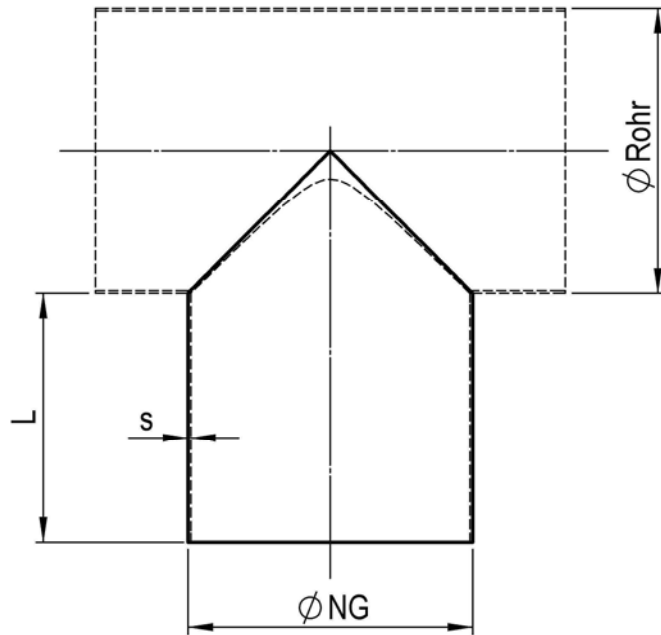


$\varnothing D$	PVC / PP / PPs / PE		
	L	H	L1
50	85	70	35
63	110	90	35
75	130	105	35
90	150	125	35
110	185	150	40
125	210	175	40
140	235	195	40
160	265	220	40
180	295	250	50
200	330	275	50
225	375	310	50
250	415	345	50
280	465	385	50
315	520	435	50
355	585	485	50
400	660	550	60

90° Branch saddle

Diameter 63, 75, 90, 110, 125, 140, 160, 180, 200, 225, 250, 280, 315, 355, 400, 450, 500, 560, 600, 630, 710, 800, 900, 1000, 1120, 1250

Material PVC / PP / PPs / PE / PPs-el



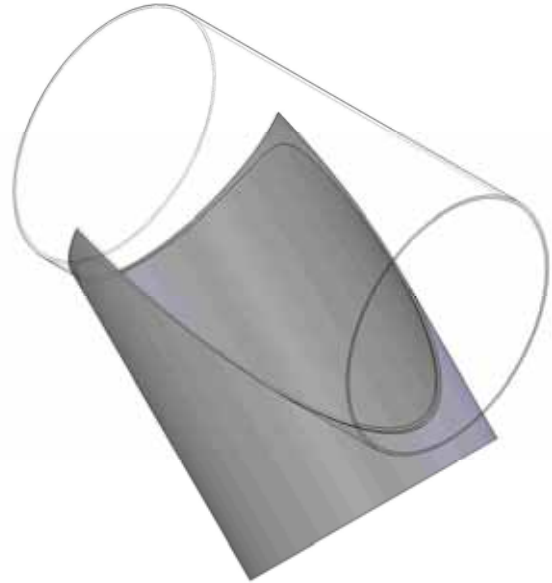
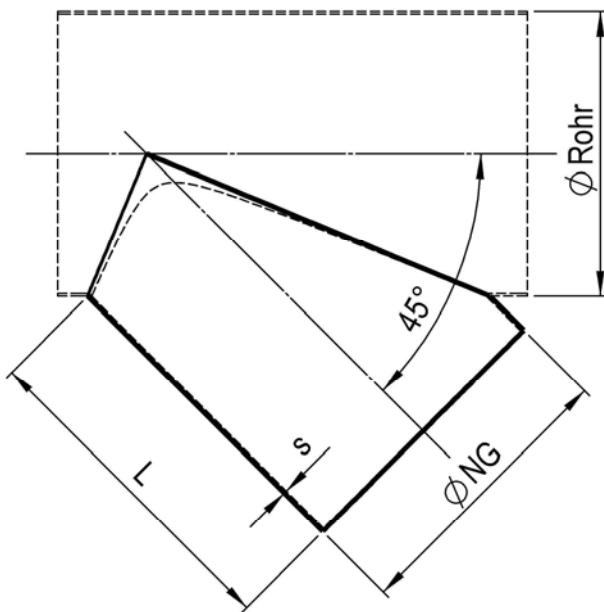
L = according to specification

ϕ ducting = according to specification

45° Branch saddle

Diameter 63, 75, 90, 110, 125, 140, 160, 180, 200, 225, 250, 280, 315, 355, 400, 450, 500, 560, 600, 630, 710, 800, 900, 1000, 1120, 1250

Material PVC / PP / PPs / PE

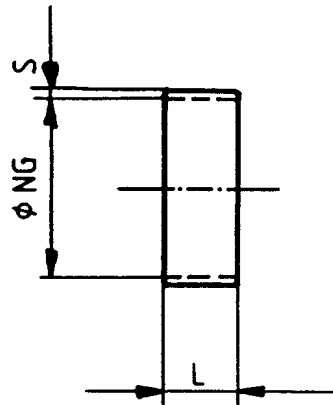


L = according to specification

Ø ducting = according to specification

Round coupler

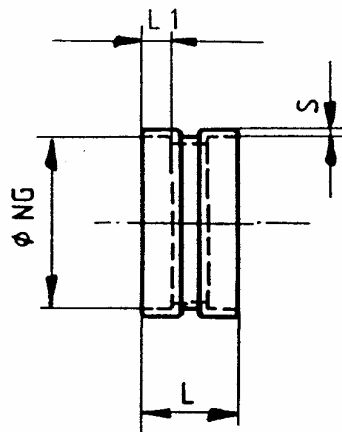
Dimensional drawing No. 1.017
Material PVC / PP / PPs / PE



Ø NG	L	PVC S	PP S	PPs S	PE S
110	60	1.8	2.7	3	2.7
125	60	1.8	3.1	3	3.1
140	60	1.8	3.5	3	3.5
160	60	1.8	3.9	3	4
180	60	1.8	4.4	3	4.4
200	60	1.8	4.9	3	4.9
225	60	1.8	5.5	3	5.5
250	80	2.0	6.1	3	6.1
280	80	2.3	6.9	3	7
315	80	2.5	4	4	4
355	80	4	4	4	4
400	80	4	4	4	4
450	80	4	4	4	4
500	80	4	5	5	5
560	80	4	5	5	5
630	100	5	5	5	5
710	100	5	5	5	5
800	100	5	5	5	5
900	100	5	5	5	5
1000	100	5	5	5	5
1120	100	5	5	5	5
1250	100	5	5	5	5

“Beck” double coupler

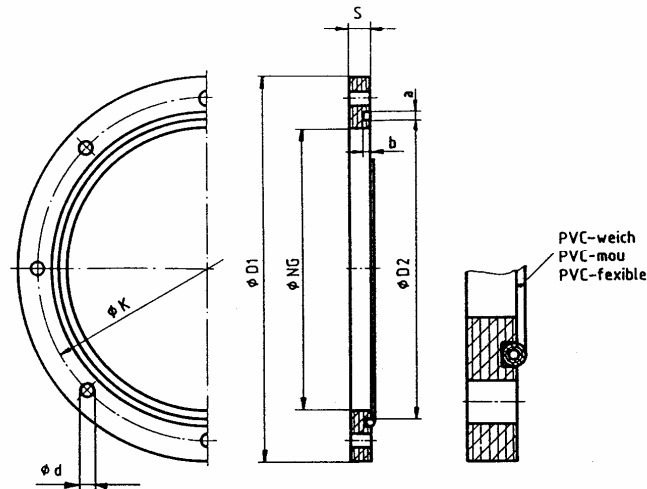
Dimensional drawing No. 1.018
Material PVC / PP / PPs / PE



Ø NG	L	PVC		PP, PPs, PE		
		L1	S	L	L2	S
75	70	30	3	130	34	3
90	70	30	3	155	40	3
110	70	30	3	155	40	3
125	70	30	3	155	40	3
140	70	30	3	155	40	3
160	90	40	3	155	40	3
180	90	40	3	150	40	3
200	110	50	3	170	50	3
225	110	50	3	170	50	3
250	110	50	3	175	50	3
280	110	50	3	175	50	3
315	130	60	3	175	50	3
355	130	60	3	160	50	5
400	130	60	3	160	50	5

Round flange to Colasit-standards

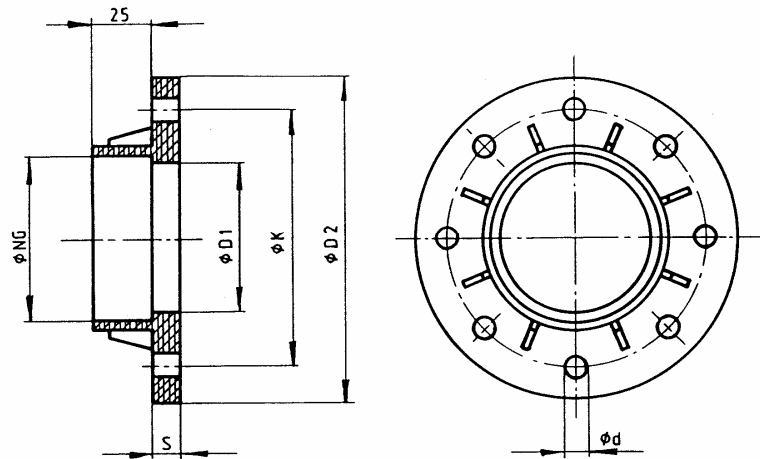
Dimensional drawing No. 1.020
Material PVC / PP / PPs / PE



Ø NG	Ø D1	S	Ø K	Ø d	n	Ø D2	a	b
63	120	10	95	9	6	72	5	3
75	135	10	110	9	6	85	5	3
90	150	10	125	9	6	100	5	3
110	170	12	145	9	6	120	5	3
125	185	12	160	9	6	135	5	3
140	200	12	175	9	8	150	5	3
160	220	12	195	9	8	170	5	3
180	240	12	215	9	8	189	5	3
200	260	12	235	9	10	209	5	3
225	285	15	260	9	10	234	5	3
250	310	15	285	9	10	258	5	3
280	340	15	315	9	12	288	5	3
315	375	15	350	9	12	323	5	3
355	435	15	400	9.5	16	373	5	3
400	480	15	445	9.5	18	418	5	3
450	530	15	495	9.5	20	468	5	3
500	600	20	555	9.5	22	522	8	6
560	660	20	615	9.5	24	582	8	6
630	730	20	685	9.5	26	652	8	6
710	810	20	765	9.5	28	732	8	6
800	900	20	855	9.5	32	822	8	6
900	1000	20	955	9.5	36	922	8	6
1000	1100	20	1055	9.5	40	1022	8	6
1120	1220	20	1175	9.5	45	1142	8	6
1250	1350	20	1305	9.5	48	1272	8	6

Round "Beck" flange

Dimensional drawing No. 1.021
Material PVC

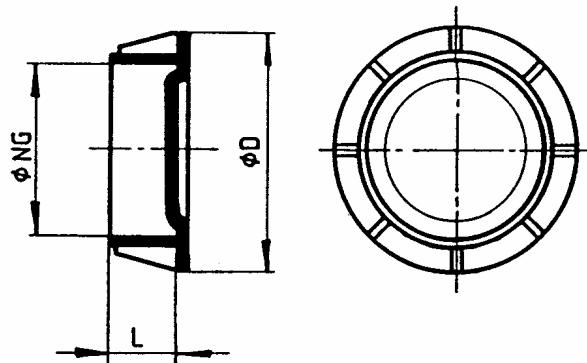


ϕNG	$\phi D1$	$\phi D2$	S	ϕK	ϕd	n
110	106	170	8	150	7	4
125	121	185	8	165	7	8
140	136	200	8	175	7	8
160	156	230	8	200	7	8
180	176	250	8	220	7	8
200	196	270	8	240	7	8
225	221	295	8	265	7	8
250	246	320	8	290	7	12
280	274	360	10	325	9	12
315	309	395	10	350	9	12
355	349	435	10	400	9	12
400	394	480	10	445	9	12

“Beck” end cap

Dimensional drawing No. 1.022

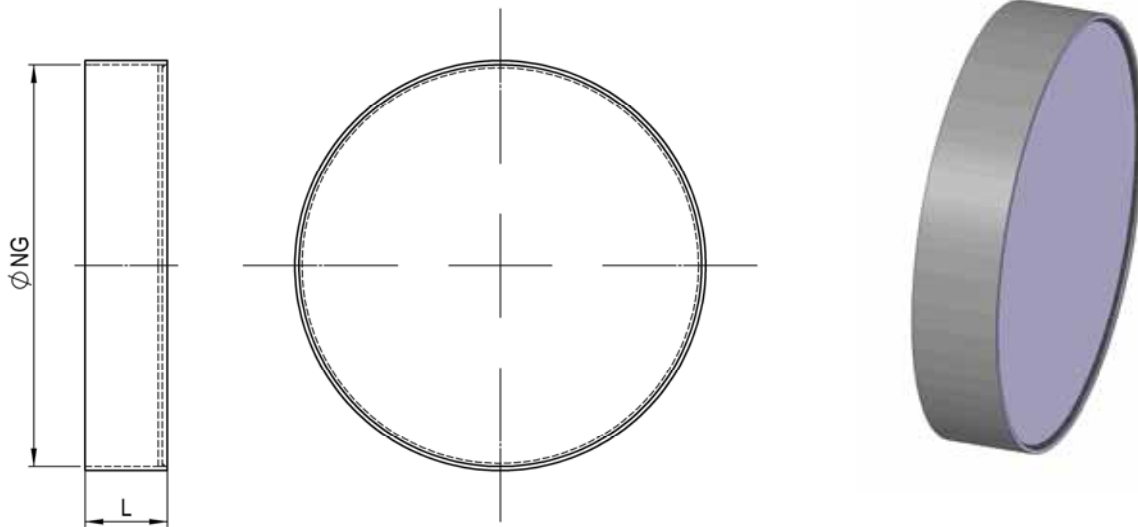
Material PVC / PP / PPs / PE



ϕNG	ϕD	L
110	140	25
125	155	25
140	175	25
160	190	25
180	215	25
200	235	25
225	255	25
250	280	25
280	315	25
315	355	25
355	395	25
400	430	25

End cap

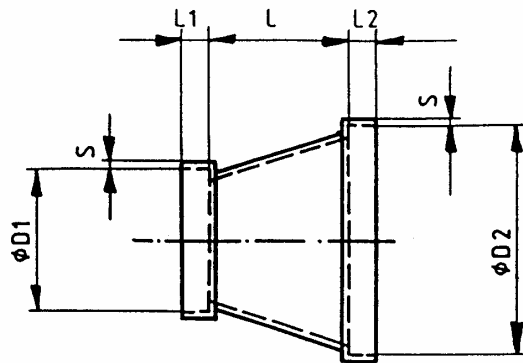
Material PVC / PP / PPs / PE



$\varnothing NG$	L
63	60
75	60
90	60
110	60
125	60
140	60
160	60
180	60
200	60
225	60
250	80
280	80
315	80
355	80
400	80
450	80
500	80
560	80
630	100
710	100
800	100
900	100
1000	100
1120	100
1250	100

Round taper-piece

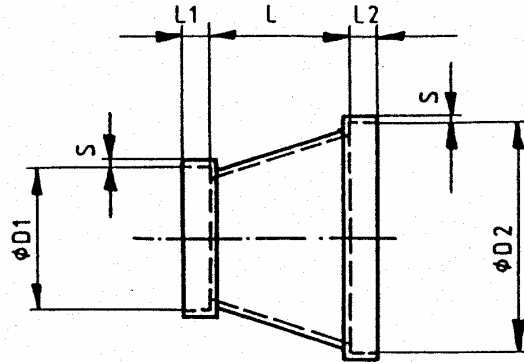
Dimensional drawing No. 1.024
Material PVC



Ø D1	Ø D2	L	L 1	L 2	S
75	90	70	25	25	3
90	110	90	25	25	3
110	125	70	25	25	3
110	140	90	25	25	3
110	160	110	35	35	3
125	140	70	35	30	3
125	160	95	35	45	3
140	160	95	35	35	3
160	180	95	35	35	3
160	200	110	35	40	3
160	225	135	35	45	3
160	250	180	35	40	3
180	200	105	40	40	3
180	250	130	40	40	3
200	225	135	40	30	3
200	250	130	40	45	3
200	315	190	40	45	3
200	355	330	40	45	3
225	250	130	40	45	3
250	280	210	40	50	4
250	315	210	40	45	4
250	355	190	40	40	4
280	315	210	40	40	4
315	355	210	40	45	4
315	400	210	40	45	4
355	400	210	40	50	4

Round taper-piece

Dimensional drawing No. 1.025
Material PP / PPs / PE

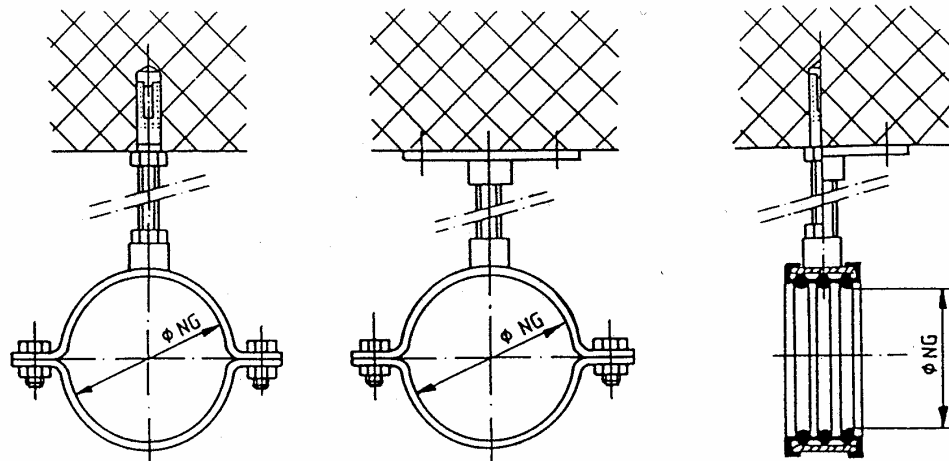


$\phi D1$	$\phi D2$	L	L 1	L 2	S
75	90	50	34	40	3
90	110	55	40	40	3
110	125	50	40	40	3
110	140	85	40	40	3
110	160	110	40	40	3
125	140	60	40	40	3
125	160	90	40	40	3
140	160	60	40	40	3
160	180	60	40	40	3
160	200	95	40	50	3
160	225	140	40	50	3
160	250	190	40	50	3
180	200	80	40	50	3
180	250	140	40	50	3
200	225	95	50	50	3
200	250	115	50	50	3
200	315	180	50	50	3
200	355	300	50	50	3
225	250	95	50	50	3
250	280	80	50	50	4
250	315	140	50	50	4
250	355	220	50	50	4
280	315	95	50	50	4
315	355	95	50	50	4
315	400	180	50	50	4
355	400	115	50	50	4

Pipe clip and fixing plate with 3/4" sleeve

Dimensional drawing
Material

No. 1.030
Steel, galvanised or stainless

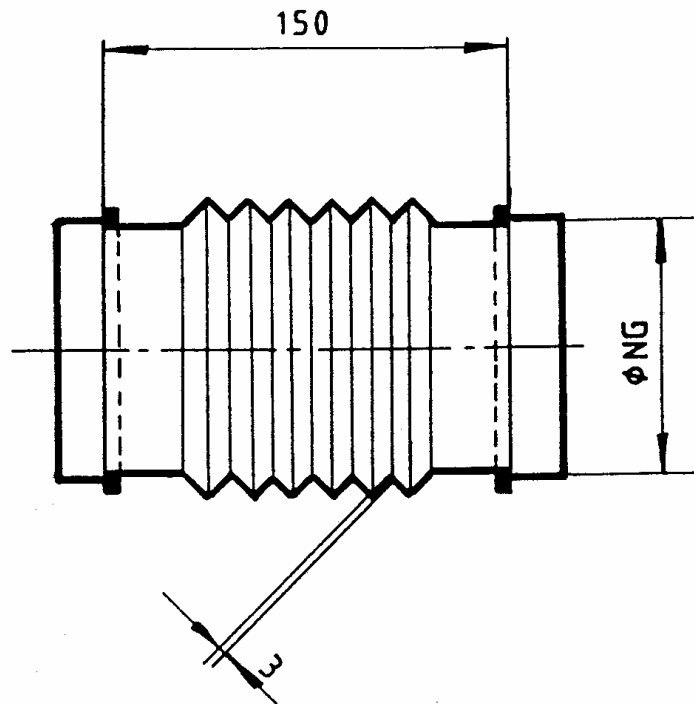


* available

Ø NG	Galvanised steel	Stainless steel A2	Vibration absorber, galvanised	3/4" sleeve
110	*	*	*	*
125	*	*	*	*
140	*	*	*	*
160	*	*	*	*
180	*	*	*	*
200	*	*	*	*
225	*	*	*	*
250	*	*	*	*
280	*	*	*	*
315	*	*	*	*
355	*	*	*	*
400	*	*	*	*
450	*	*	*	*
500	*	*	*	*
560	*	*	*	*
630	*	*	*	*
710	*	*	*	*
800	*	*	*	*
900	*	*	*	*
1000	*	*	*	*
1120	*	*	*	*
1250	*	*	*	*

Corrugated-sleeve, "Beck" type II

Dimensional drawing No. 1.023
Material soft PVC

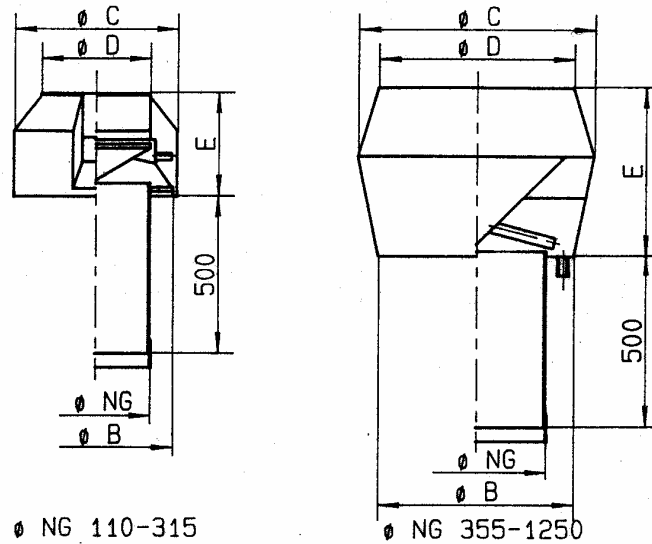


$\varnothing NG$
110
125
140
160
180
200
225
250
280
315
355
400

Rain cover

Dimensional drawing
Material

No. 1.028
PVC / PP / PPs / PE

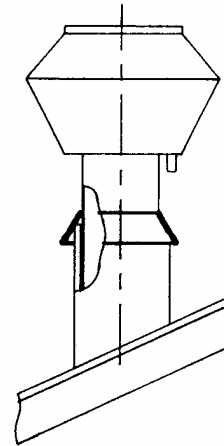
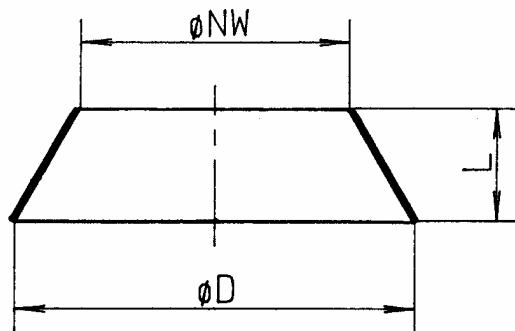


Ø NG	Ø B	Ø C	Ø D	E
110	174	188	125	117
125	174	188	125	117
140	230	240	160	150
160	230	240	160	150
180	284	301	200	195
200	284	301	200	195
225	358	374	250	240
250	358	374	250	240
280	454	470	315	300
315	454	470	315	300
355	465	611	518	430
400	510	675	568	490
450	560	741	613	560
500	610	807	668	610
560	670	889	734	680
630	740	975	788	770
710	820	1087	862	900
800	910	1211	970	990
900	1010	1343	1076	1100
1000	1110	1475	1154	1260
1120	1230	1638	1242	1480
1250	1360	1811	1372	1640

Round collarette

Dimensional drawing No. 1.029

Material PVC / PP / PPs / PE



$\varnothing NW$	$\varnothing D$	L
110	197	75
125	212	75
140	227	75
160	247	75
180	267	75
200	287	90
225	329	90
250	354	90
280	484	90
315	419	90
355	459	90
400	504	90
450	577	110
500	627	110
560	687	110
630	757	110
710	837	110
800	944	125
900	1044	125
1000	1144	125
1120	1264	125
1250	1394	125